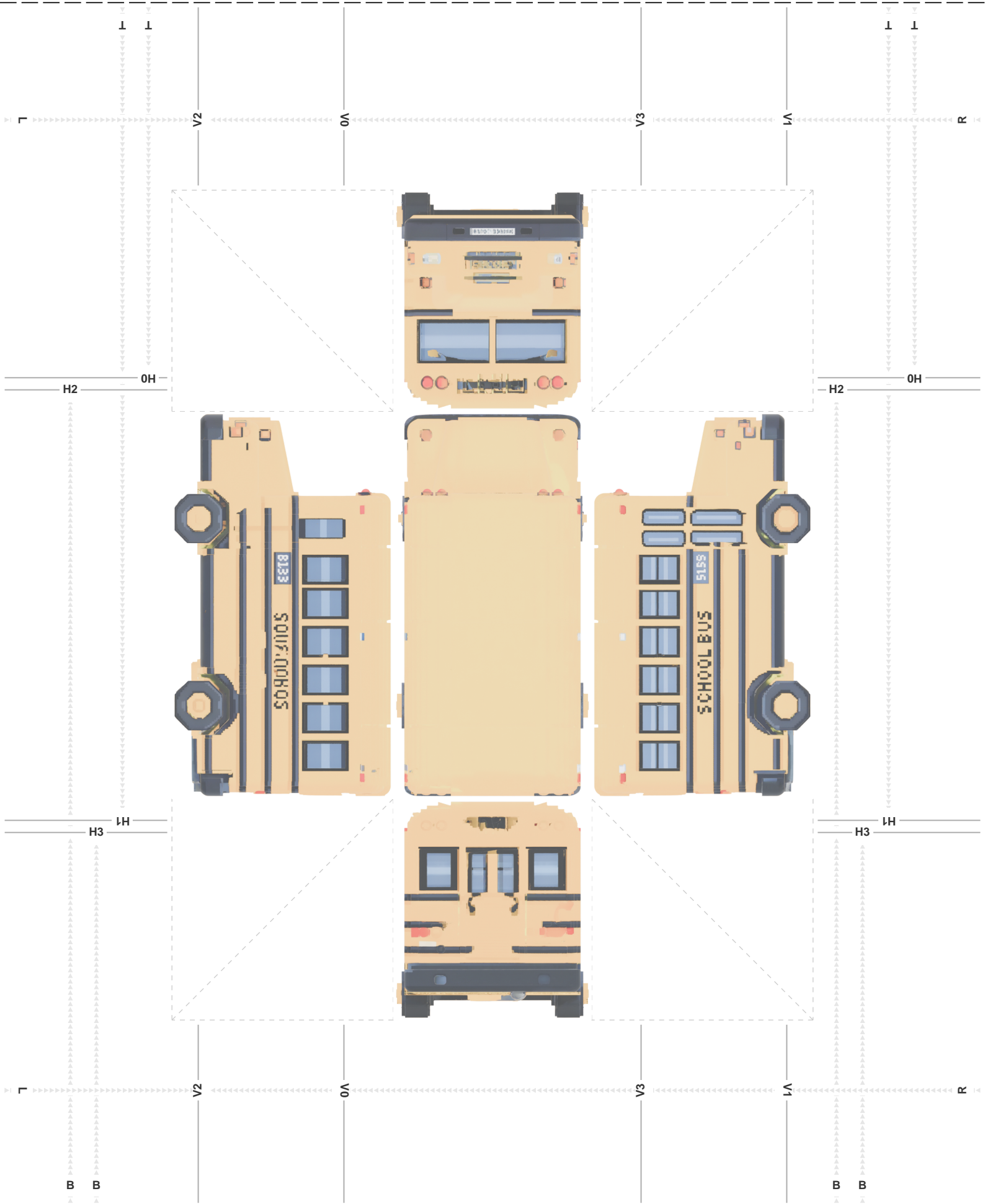


TRIM TO THIS LINE



TRIM TO THIS LINE

1. Print at 100% scale.
2. Trim or fold marked trim lines.
3. Fold B -> H2.
4. Fold B -> H3.
5. Fold L -> V0.
6. Fold L -> V1.
7. Fold T -> H0.
8. Fold T -> H1.
9. Fold R -> V2.
10. Fold R -> V3.
11. Crease each fold with fingernail.
12. Fold each crease over backwards and crease again.
13. Cut or tear carefully around edges of pattern in center.
14. Fold corners of pattern inward so triangles touch.